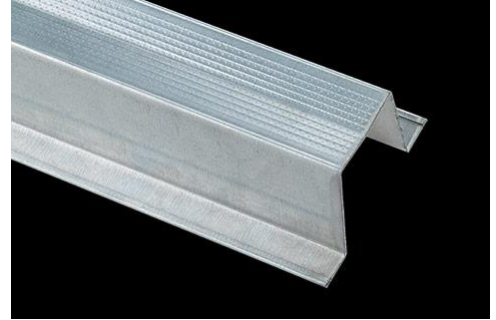


1-1/2" DWC Hat Furring Channel

1-1/2" DWC Hat Furring Channel is a ceiling and wall furring channel designed with wide nailing flanges for positive screw attachment. Offered in 20, 22 and 25 gauge steel. In 25 gauge steel, this product features hemmed edges and knurling to ensure positive screw placement and eliminate wandering. The standard length is 12'; however, other lengths may be available.



Product Data and Ordering Information

Material: 20, 22, 25 gauge, G40 galvanized coating
Part Number: 150F125

Length	Pieces Per Bundle	Bundles Per Pallet	Feet Per Bundle
20 Gauge			
12'	10	45	120
22 and 25 Gauge			
12'	10	45	120



Drawing not to scale

All Phillips products are made in the U.S.A.

ASTM and Code Standards

All Phillips resilient channels meet or exceed the following ASTM standards:

- ASTM C 645 Standard Specification for Nonstructural Steel Framing Members
- ASTM A653 Standard Specification for Steel Sheet, Zinc-Coated (Galvanized) or Zinc-Iron Alloy-Coated (Galvannealed) by the Hot-Dip Process

SDS and other technical information available at www.phillipsmfg.com.

Leed Credits for Recycled Content

MR2 – The steel and vinyl used in Phillips Manufacturing products is 100% recyclable.

MR4 – Phillips Manufacturing steel and vinyl products have a minimum of:

Total recycled content:	30%
Post-consumer recycled content:	25%
Pre-consumer recycled content:	5%

Storage

Avoid bending or other damage and store in a dry place protected from moisture.