

2-1/2" x 20 GA.
STUD TRACK
BRACES EVERY
2ND STUD AT
1/3 POINTS OF
STUD HEIGHT
AT 4' O.C. MAX.

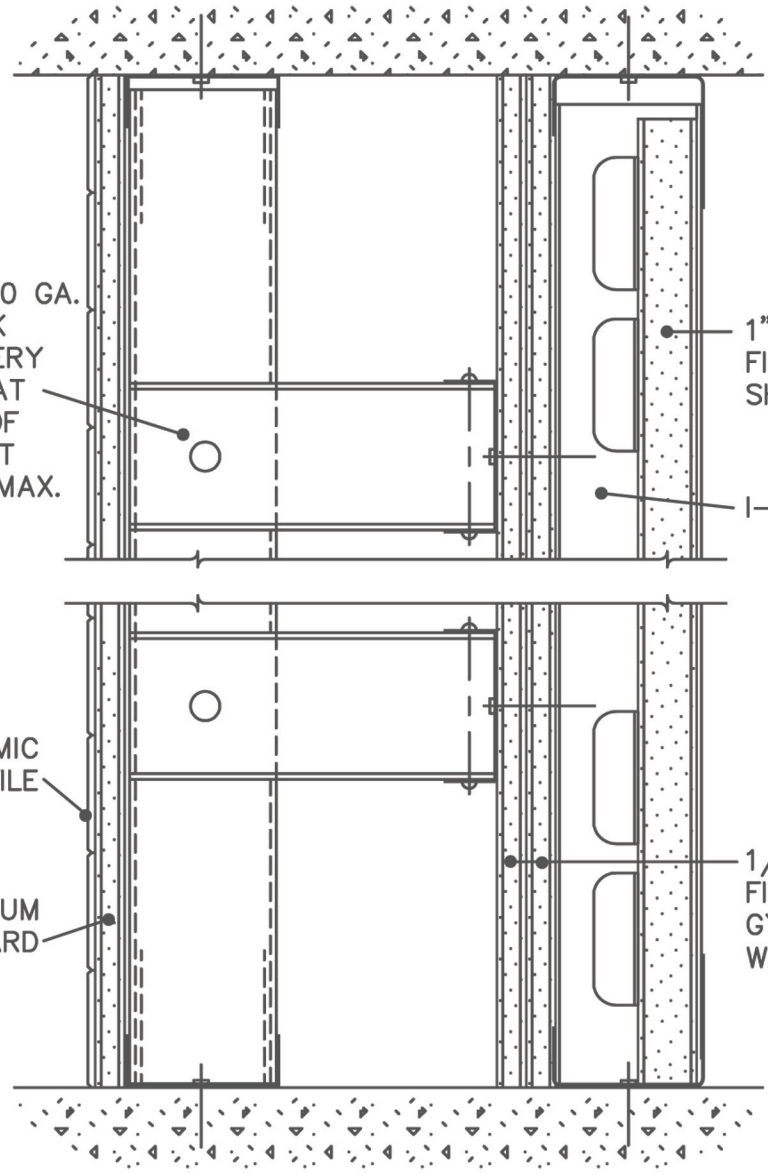
1"
FIRE-SHIELD
SHAFTLINER

I-STUD

CERAMIC
TILE

MR GYPSUM
BOARD

1/2"
FIRE-SHIELD C
GYPSUM
WALLBOARD



SHAFTWALL CHASE WALL
SECTION A-A

09260FF