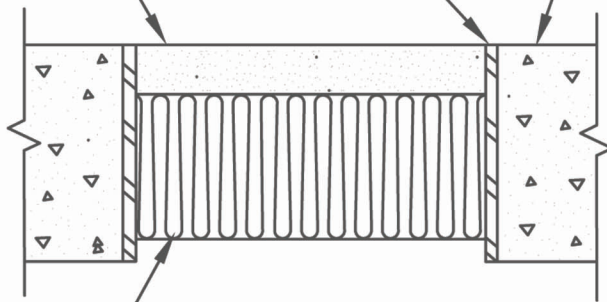


F RATING - 3 HR  
 T RATING - 1/2 HR

STEEL SLEEVE (OPTIONAL)  
 NOM. 6" DIA.

STA-SMOOTH FS 90  
 FIRE-SHIELD COMPOUND  
 MIN. 2" THICKNESS

REINFORCED LIGHTWEIGHT OR  
 NORMAL WEIGHT CONCRETE  
 MIN. 4-1/2" THICKNESS (FLOOR  
 OR WALL ASSEMBLY)  
 6" MAX. DIA. OF OPENING



MINERAL WOOL BATT  
 INSULATION MIN. 2"  
 THICKNESS OF MIN. 6 PCF

NOTE: WALL ASSEMBLIES MAY ALSO BE  
 CONSTRUCTED OF ANY UL  
 CLASSIFIED CONCRETE BLOCKS

TEST REF.  
 UL SYSTEM NO. CAJ0038

SCALE: NONE	VOID FILL ASSEMBLY	
DATE: 2001	NATIONAL GYPSUM COMPANY	DETAIL 07270_06